

# SOKAR DOUBLE INSTALLATION INSTRUCTION

## LED outdoor floodlight

LED architectural light

### WARNING!

Confirm the correct connection method, incorrect connection can lead to improper work, and even damage. If installed wrong, it may fall off. Refer to the installation instruction for installation.

#### I. Product introduction:

- The fixture is LED luminaire.
- Surface/Wall installation method.
- ADC12 Die-casting aluminum, High-intensity tempered glass, PMMA optical lens, Reflector, Silicone waterproof sealed
- Isolated space for PCB and diver keeps rapid and stable the heat dissipation.
- Ingress protection is IP66
- Electrical class: Class

#### II. Observe the following dos and don'ts

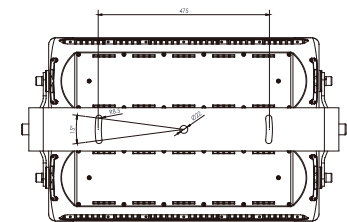
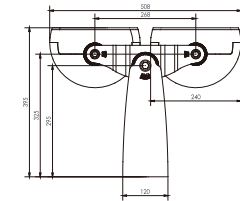
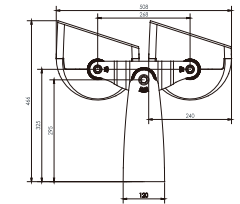
1. Install in the IP 65 environment or beneath the IP65.
2. Prohibit punching any position of lamps
3. Please turn off the power and contact the dealer for problems in connection or other abnormal cases.
4. Installed by the qualified electrician holding a certificate.
5. Prohibit operating the lamps beyond the voltage scope as stipulated
6. Don't make the external power cable exposed during wiring.

#### III. Remarks for the cables

When you get the fixture, please check and find the relative version and confirm its Color Temperature, Electrical class, the cable out.

##### Attention:

- When you get the fixtures is class III, please use a transformation to light.
- When you get the RGB DMX512 fixture, please accurately connect the DMX cables, otherwise, it will influence the regular work.



CABLES OUT FOR DIFFERENT COLOR TEMPERATURE AND ELECTRICAL CLASS			
_ VERSION 1		_ VERSION 2	
Single Color _ WW _ CW		_ RGB (DMX512)	
_ Class I	L, N, E	Class III	Power cable: 2pin1 V+ /Red wire, V- /Blue wire
Class III _ DC36V _ DC24V _ DC12V	V+ /Red wire V- /Blue wire	_ DC36V _ DC24V _ DC12V	DMX IN cable: 3pin1 ■DMX+ Red wire ■DMX- Blue wire ■GND Green wire

# SOKAR DOUBLE INSTALLATION INSTRUCTION

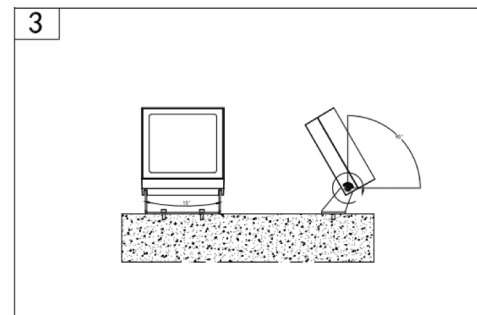
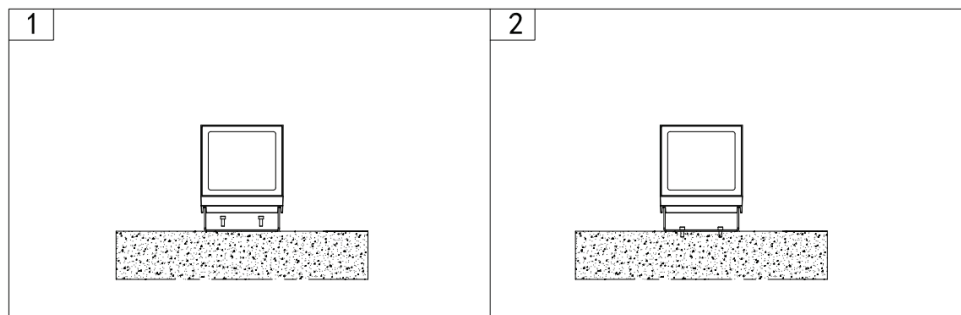
## LED outdoor floodlight

LED architectural light

### IV. Installation Instructions

1. According to step ①②, use screws to fix the bottom on the mountings surface.

2. According to step ②, adjust the bracket as your project needed.



3. **Notes:** The fixture must get reliable connection with the mounting surface, any screws in the lamps should not be arbitrarily loosed. There is no special requirement on the installation direction.

### V. Technical specification

Model series	Model NO	Color	Power (W)	Lumen (lm)	Kelvin (K)	CRI	IP	VAC (input) / VDC
SOKAR DOUBLE720 (Single color)	SOKAR DOUBLE720 827	GR/RAL	720W	64800-100800	2700K	CRI80/ CRI90	IP66/ IK08	220-240VAC/ 24VDC
	SOKAR DOUBLE720 830	GR/RAL	720W	72000-109440	3000K	CRI80/ CRI90	IP66/ IK09	220-240VAC/ 24VDC
	SOKAR DOUBLE720 840	GR/RAL	720W	79200-119520	4000K	CRI80/ CRI90	IP66/ IK10	220-240VAC/ 24VDC
SOKAR DOUBLE720 (Multi color)	SOKAR DOUBLE720CCT 82765	GR/RAL	720W		2700K-6500K	CRI80/ CRI90	IP66/ IK10	220-240VAC/ 24VDC
	SOKAR DOUBLE720R/G/B	GR/RAL	720W		RED/GREEN/BLUE		IP66/ IK10	220-240VAC/ 24VDC
	SOKAR DOUBLE720RGB	GR/RAL	720W		RGB		IP66/ IK10	220-240VAC/ 24VDC
	SOKAR DOUBLE720RGBW 8XX	GR/RAL	720W		RGBW (W-2700K, 3000K,4000K)	CRI80/ CRI90	IP66/ IK10	220-240VAC/ 24VDC
Angle	2,5°/6°/12°/20°/30°/40°/60°/90°/10x70°/15x60°/Custom							
Type of dimming	TUYA, RF, Bluetooth, DMX, 0/1-10V, PWM, TRIAC, SMART, Casambi, Zigbee, DALI, Custom							
Glare protection	Honeycomb grill, Anti-glare shield, Custom							

VI. Customed made by LAMPPIA.

VII. LAMPPIA s.r.o.

Chmelniky 38,  
040 16 Kosice,  
Slovak republic

Mobile: + 421 905 549 345

E-mail: lampia@lampia.com

Website: www.lampiatech.com

VIII. LAMPPIA has the right to the interpretation of the installation instructions.