

LED FILAMENT BULB C35 4F

LED DIMMABLE FILAMENT BULB E14 OR E12

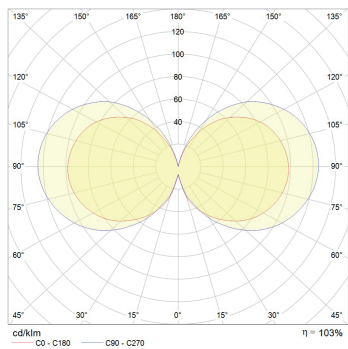


LED BULB SPECIFICATIONS:

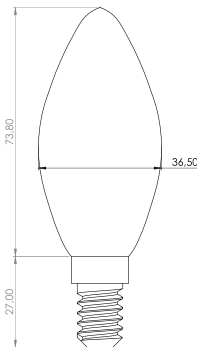
- LED filament technology
- Continuous and low flicker dimming supporting Trailing and leading edge phase cut dimming
- High color rendering index for spectacular light quality over CRI90+
- (Standard) or CRI80+ (on demand)
- Wide color temperature range with standard versions 2700K, 3000K and 4000K and custom made from 2000K up to 6500K (on demand)
- Retrofit design of LED bulb for easy replacement of old style halogen bulbs
- 3 variations of glass surface finish: Opal matt(OD), Frozen matt(FD), Clear(CD)
- Option :
 - E14 220-240 VAC 50/60 Hz
 - E12 110-120 VAC 50/60 Hz
- SDCM 3 for clear glass and SDCM 5 for frozen and opal glass
- Power factor: 0,899*
- THD 49,30 %*
- Flicker lower than 0,9 %*

*Measured at 230 VAC 50 Hz

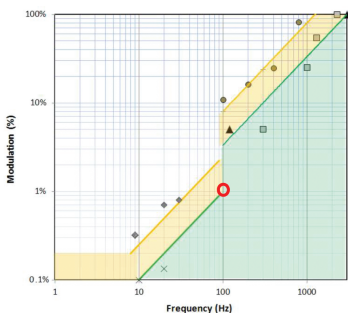
PHOTOMETRIC DATA



SIZE



IEEE PAR1789 FLICKER EVALUATION



Measured Flicker values:*

- Flicker percentage: 0.9 %
- Flicker index: 0.0023
- Flicker frequency: 100 Hz
- PST: 0.091
- SVM: 0.000
- Assist Mp: 0.000

*Measured at 230 VAC 50 Hz

| MODEL* | POWER(W) | LUMENS(lm) | CCT(K) | ANGLE |
|----------------|----------|------------|--------|-------|
| C3514 4FCD 922 | 4 | 220 | 2200 | 330° |
| C3514 4FCD 927 | 4 | 425 | 2700 | 330° |
| C3514 4FCD 930 | 4 | 440 | 3000 | 330° |
| C3514 4FCD 940 | 4 | 445 | 4000 | 330° |
| C3514 4FFD 922 | 4 | 187 | 2200 | 330° |
| C3514 4FFD 927 | 4 | 361 | 2700 | 330° |
| C3514 4FFD 930 | 4 | 374 | 3000 | 330° |
| C3514 4FFD 940 | 4 | 379 | 4000 | 330° |
| C3514 4FOD 922 | 4 | 121 | 2200 | 330° |
| C3514 4FOD 927 | 4 | 233 | 2700 | 330° |
| C3514 4FOD 930 | 4 | 242 | 3000 | 330° |
| C3514 4FOD 940 | 4 | 244 | 4000 | 330° |

*E14 - C3514 , E12 - C3512 identical data

ORDER OPTIONS:

When ordering, please fill in the parameters in bracket in this order:

EXAMPLE: C3514 4FCD 922

| SHAPE | BASE | POWER | GLASS SURFACE | DIMMING | CRI | KELVIN |
|-----------|--|---------|--|----------------------------------|------------|--|
| C35 | 14 | 4 | FC | D | 9 | 22 |
| C35 (C35) | E14 220-240 VAC 50/60 Hz (14) E12 110-120 VAC 50/60 HZ (12) | 4 W (4) | Clear (FC) Frozen (FF) Opal (FO) | Dimmable (D) Non dimmable (-) | CRI 90 (9) | 2200K (22) 2700K (27) 3000K (30) 4000K (40) |