

# LED FILAMENT BULB G45 4F E27/E26

LED DIMMABLE FILAMENT BULB E14 OR E12

LAMP | A **tech**

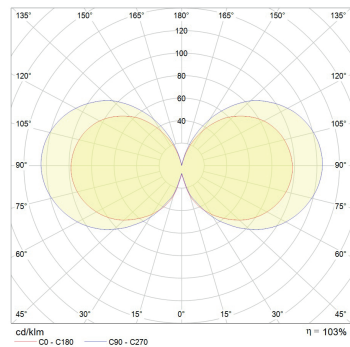


## LED BULB SPECIFICATIONS:

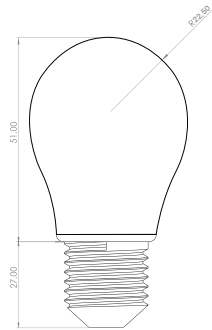
- LED filament technology
- Continuous and low flicker dimming supporting Trailing and leading edge phase cut dimming
- High color rendering index for spectacular light quality over CRI90+
- (Standard) or CRI80+ (on demand)
- Wide color temperature range with standard versions 2700K, 3000K and 4000K and custom made from 2000K up to 6500K (on demand)
- Retrofit design of LED bulb for easy replacement of old style halogen bulbs
- 3 variations of glass surface finish: Opal matt(OD), Frozen matt(FD), Clear(CD)
- Option :
  - E27 220-240 VAC 50/60 Hz
  - E26 110-120 VAC 50/60 HZ
- SDCM 3 for clear glass and SDCM 5 for frozen and opal glass
- Power factor: 0,899\*
- THD 49,30 %\*
- Flicker lower than 0,9 %\*

\*Measured at 230 VAC 50 Hz

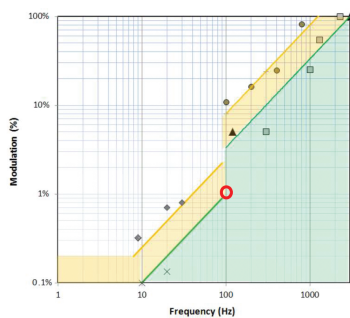
### PHOTOMETRIC DATA



### SIZE



### IEEE PAR1789 FLICKER EVALUATION



Measured Flicker values:\*

- Flicker percentage: 0.9 %
- Flicker index: 0.0023
- Flicker frequency: 100 Hz
- PST: 0.091
- SVM: 0.000
- Assist Mp: 0.000

\*Measured at 230 VAC 50 Hz

MODEL*	POWER(W)	LUMENS(lm)	CCT(K)	ANGLE
G4527 4FCD 922	4	220	2200	330°
G4527 4FCD 927	4	425	2700	330°
G4527 4FCD 930	4	440	3000	330°
G4527 4FCD 940	4	445	4000	330°
G4527 4FFD 922	4	187	2200	330°
G4527 4FFD 927	4	361	2700	330°
G4527 4FFD 930	4	374	3000	330°
G4527 4FFD 940	4	379	4000	330°
G4527 4FOD 922	4	121	2200	330°
G4527 4FOD 927	4	233	2700	330°
G4527 4FOD 930	4	242	3000	330°
G4527 4FOD 940	4	244	4000	330°

\*E27 - G4527 , E26 - G4526 identical data

## ORDER OPTIONS:

When ordering, please fill in the parameters in bracket in this order:

**EXAMPLE: G4527 4FCD 922**

SHAPE	BASE	POWER	GLASS SURFACE	DIMMING	CRI	KELVIN
G45	E27	4	FC	D	9	22
G45 (G45)	E27 220-240 VAC 50/60 Hz (14) E26 110-120 VAC 50/60 HZ (12)	4 W (4)	Clear (FC) Frozen (FF) Opal (FO)	Dimmable (D) Non dimmable (-)	CRI 90 (9)	2200K (22) 2700K (27) 3000K (30) 4000K (40)