

LED FILAMENT BULB ST64 6F

LED DIMMABLE FILAMENT BULB E27 OR E26

LAMP|A **tech**

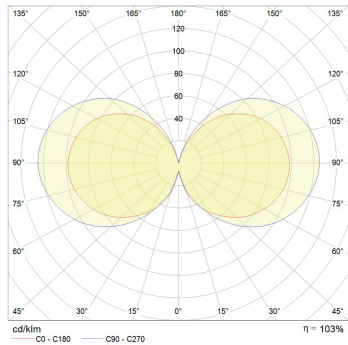


LED BULB SPECIFICATIONS:

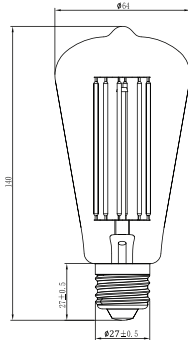
- LED filament technology
- Continuous and low flicker dimming supporting Trailing and leading edge phase cut dimming
- High color rendering index for spectacular light quality over CRI90+
- (Standard) or CRI80+ (on demand)
- Wide color temperature range with standard versions 2700K, 3000K and 4000K and custom made from 2000K up to 6500K (on demand)
- Retrofit design of LED bulb for easy replacement of old style halogen bulbs
- 3 variations of glass surface finish: Opal matt(OD), Frozen matt(FD), Clear(CD)
- Option:
 - E27 220-240 VAC 50/60 Hz
 - E26 110-120 VAC 50/60 Hz
- SDCM 3 for clear glass and SDCM 5 for frozen and opal glass
- Power factor: 0.883*
- THD: 53.26 %*
- Flicker lower than 1 %*

*Measured at 230 VAC 50 Hz

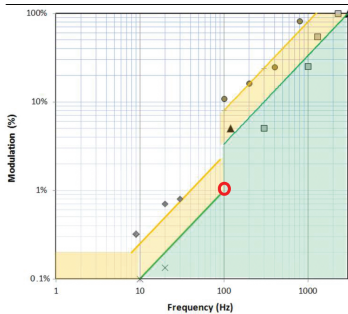
PHOTOMETRIC DATA



SIZE



IEEE PAR1789 FLICKER EVALUATION



Measured Flicker values:*

- Flicker percentage: 1.0 %
- Flicker index: 0.0028
- Flicker frequency: 100 Hz
- PST: 0.035
- SVM: 0.00
- Assist Mp: 0.00

*Measured at 230 VAC 50 Hz

MODEL*	POWER(W)	LUMENS(lm)	CCT(K)	ANGLE
ST6427 6FCD 922	6	356	2200	360°
ST6427 6FCD 927	6	688	2700	360°
ST6427 6FCD 930	6	712	3000	360°
ST6427 6FCD 940	6	720	4000	360°
ST6427 6FFD 922	6	303	2200	360°
ST6427 6FFD 927	6	584	2700	360°
ST6427 6FFD 930	6	605	3000	360°
ST6427 6FFD 940	6	614	4000	360°
ST6427 6FOD 922	6	196	2200	360°
ST6427 6FOD 927	6	377	2700	360°
ST6427 6FOD 930	6	392	3000	360°
ST6427 6FOD 940	6	395	4000	360°

*E27 - ST6427, E26 - ST6426 identical data

ORDER OPTIONS:

When ordering, please fill in the parameters in bracket in this order:

EXAMPLE: ST6427 6FCD 922

SHAPE	BASE	POWER	GLASS SURFACE	DIMMING	CRI	KELVIN
ST64	27	6	FC	D	9	22
ST64 (ST64)	E27 220-240 VAC 50/60 Hz (27) E26 110-120 VAC 50/60 Hz (26)	6 W (6)	Clear (FC) Frozen (FF) Opal (FO)	Dimmable (D) Non dimmable (-)	CRI 90 (9)	2200K (22) 2700K (27) 3000K (30) 4000K (40)